

WHITE ROCK ELEMENTARY SCHOOL



WHITE ROCK ELEMENTARY SCHOOL PROJECT STATUS

Agenda

Welcome / Introductions

Building Design

Construction Progress


Questions + Answers

Building Tour

SITE DESIGN

SITE PLAN

- Flagpole & Marquee
- Security
- Construction Zones
- Fence

 CONSTRUCTION ZONES

TEMPORARY
ADMINISTRATION /
FRONT OFFICE

CONSTRUCTION
FENCE

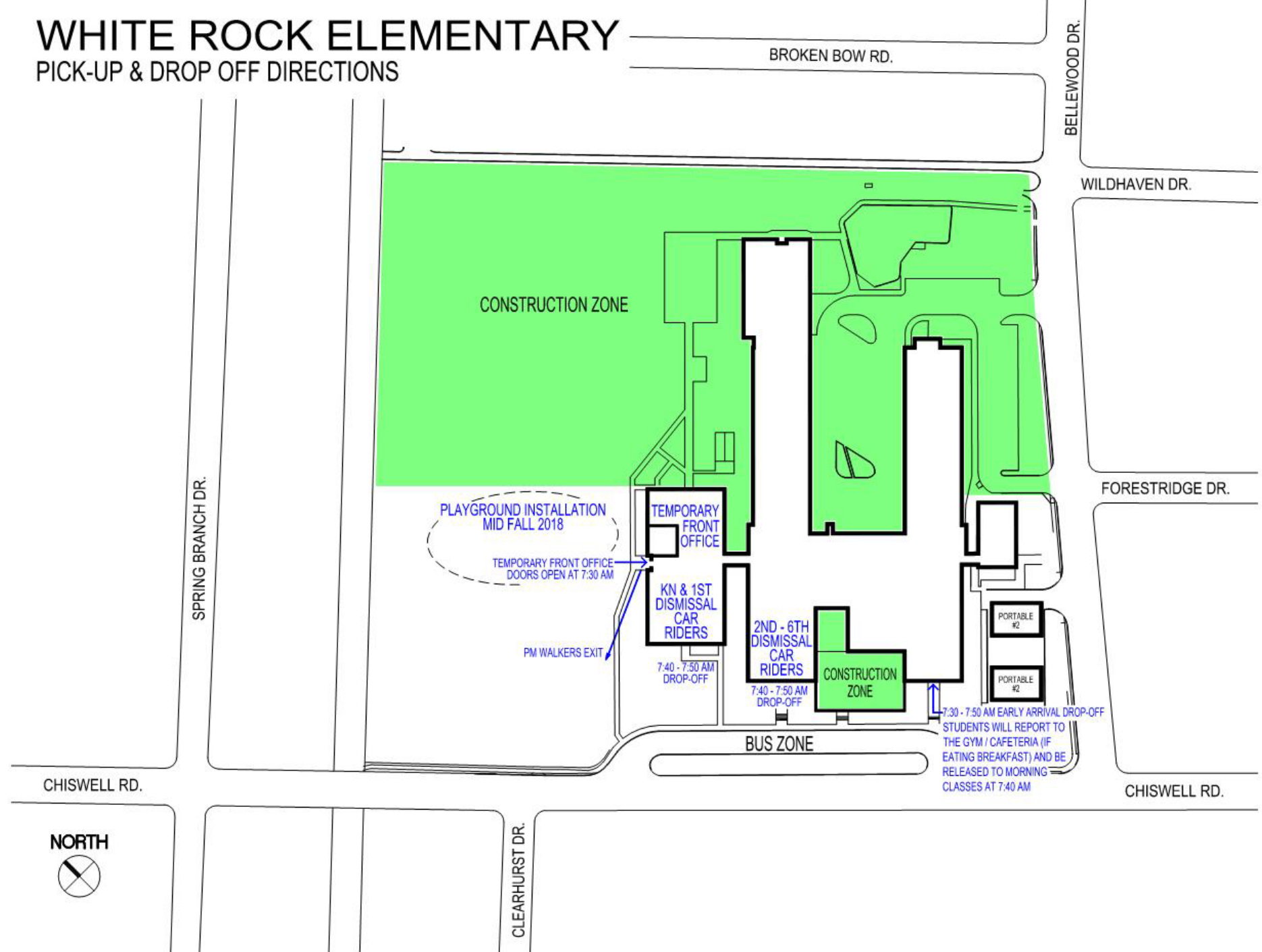
TEMPORARY
FLAGPOLE AND
DIGITAL MARQUEE



WHITE ROCK ELEMENTARY






PICK-UP & DROP OFF DIRECTIONS

- Playground
- Traffic / Parking



BUILDING DESIGN

FLOOR PLAN

-  CORE ACADEMIC SPACES
-  SHARED ACADEMIC SPACES
-  PUBLIC SHARED SPACES
-  ADMINISTRATIVE SPACES
-  SERVICE SPACES

PERKINS+WILL



FLOOR PLAN

- Front Office
- Cubbies / Lockers
- Classrooms / Corridors
- Library Furniture



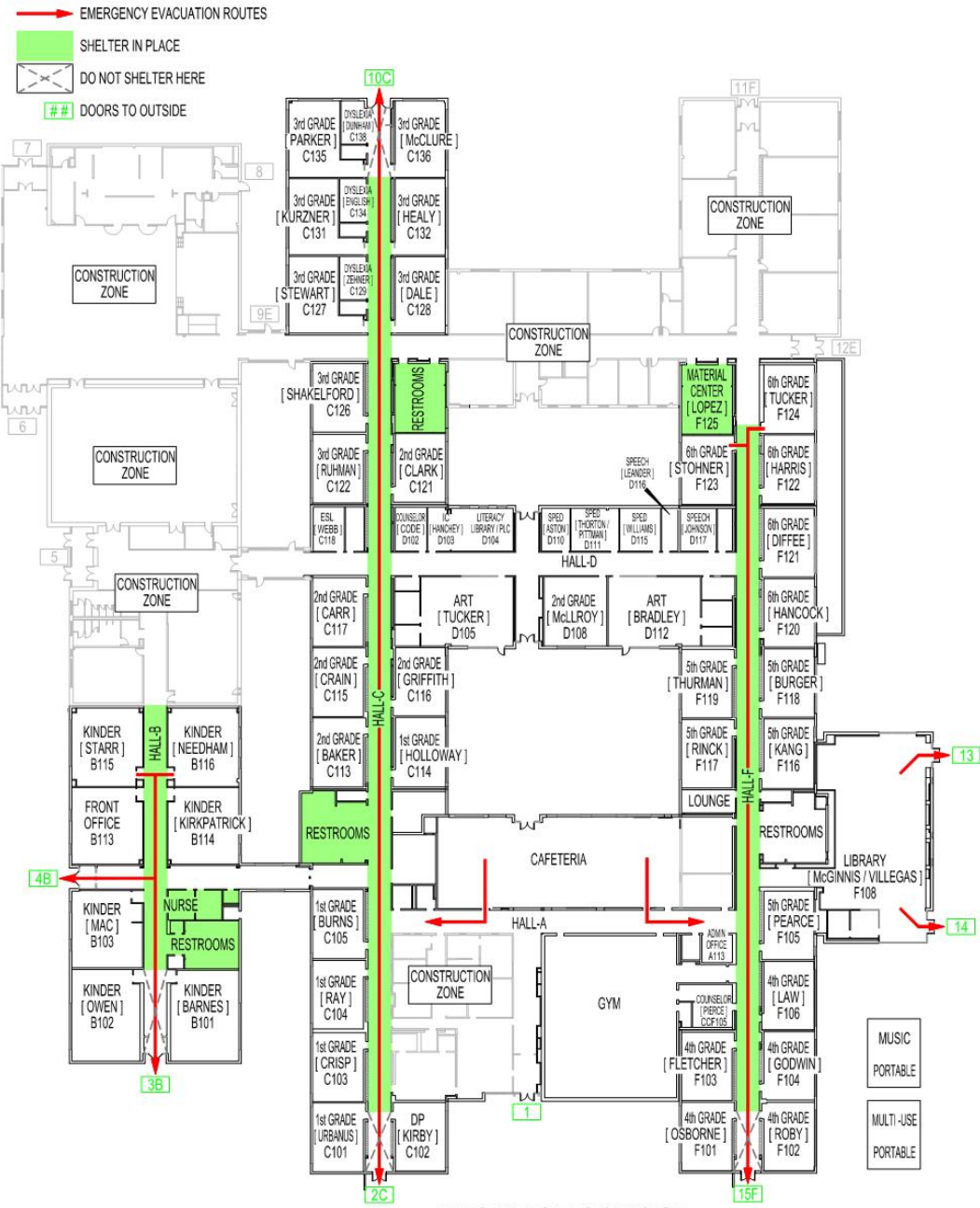
CONSTRUCTION COMPLETED / AVAILABLE FOR USE

CONSTRUCTION IN PROGRESS



FLOOR PLAN

- After Hours Events
- XPLORE Entry
- Library After Hours



CONSTRUCTION PROGRESS



April 2, 2018

PERKINS+WILL

**CADENCE
MC SHANE**
CONSTRUCTION

White Rock Elementary Expansion

Lat/Lon: 32.874017 -96.723920

Order No. 64349



Aerial Photography, Inc. 954-568-0484





QUESTIONS + ANSWERS